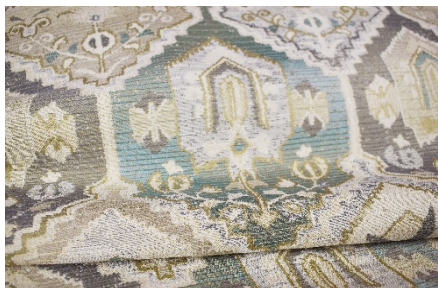


Pattern Detail and Specifications

BANYU



Color:	Haze
Fiber Content:	100% Polyester
Fabric Repeat:	14.5" x 13.5"
Fabric Width:	54"
Fabric Backing:	100% Polyester
Fabric Grade:	B
Fabric Direction:	Up the Roll
Country of Origin:	China

FLAMMABILITY:

CALIFORNIA TECH	PASS
TB117-2013 :	
UFAC:	CLASS 1

PERFORMANCE:

Abrasion:	Medium Duty – 9,000 Cycles
Light Fastness:	40 Hours - Class 4

Color Fastness to Crocking

Wet:	Class 4.0
Dry:	Class 4.0

CARE & CLEANING

Cleaning Code: W

"Spot clean only with water based shampoo or foam upholstery cleaner. Pretest a small, inconspicuous area before proceeding. Do not overwet. Do not use solvents to spot clean. Pile fabrics may require brushing with a non-metallic, stiff bristle brush to restore appearance. Hot water extraction or steam cleaning is not a recommended cleaning method. Cushion covers should not be removed and laundered. To prevent overall soiling, frequent vacuuming or light brushing with a non metallic, stiff bristle brush to remove dust and grime is recommended. When cleaning a spill, blot immediately to remove spilled material. Clean spots or stains from the outside to the middle of the affected area to prevent circling. Use a professional furniture cleaning service when an overall soiled condition has been reached."

CULP
UPHOLSTERY
F A B R I C S

1823 Eastchester Drive. High Point, NC 27265. USA

www.Culp.com