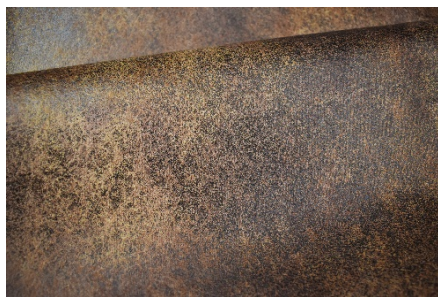


## Pattern Detail and Specifications

MONTAQUILA



<b>Color:</b>	Saddle
<b>Fiber Content:</b>	100% Polyester
<b>Fabric Repeat:</b>	n/a
<b>Fabric Width:</b>	54"
<b>Fabric Backing:</b>	100% Polyester
<b>Fabric Grade:</b>	A
<b>Fabric Direction:</b>	Up The Roll
<b>Country of Origin:</b>	China

### FLAMMABILITY:

<b>CALIFORNIA TECH TB117-2013 :</b>	PASS
<b>UFAC:</b>	CLASS 1

### PERFORMANCE:

<b>Abrasion:</b>	Heavy Duty – 15,000 Cycles
<b>Light Fastness:</b>	40 Hours - Class 4

#### Color Fastness to Crocking

<b>Wet:</b>	Class 4.5
<b>Dry:</b>	Class 4.5

### CARE & CLEANING

<b>Cleaning Code:</b>	W
-----------------------	---

"Spot clean only with water based shampoo or foam upholstery cleaner. Pretest a small, inconspicuous area before proceeding. Do not overwet. Do not use solvents to spot clean. Pile fabrics may require brushing with a non-metallic, stiff bristle brush to restore appearance. Hot water extraction or steam cleaning is not a recommended cleaning method. Cushion covers should not be removed and laundered. To prevent overall soiling, frequent vacuuming or light brushing with a non metallic, stiff bristle brush to remove dust and grime is recommended. When cleaning a spill, blot immediately to remove spilled material. Clean spots or stains from the outside to the middle of the affected area to prevent circling. Use a professional furniture cleaning service when an overall soiled condition has been reached."

**CULP**  
UPHOLSTERY  
F A B R I C S

1823 Eastchester Drive. High Point, NC 27265. USA

[www.Culp.com](http://www.Culp.com)